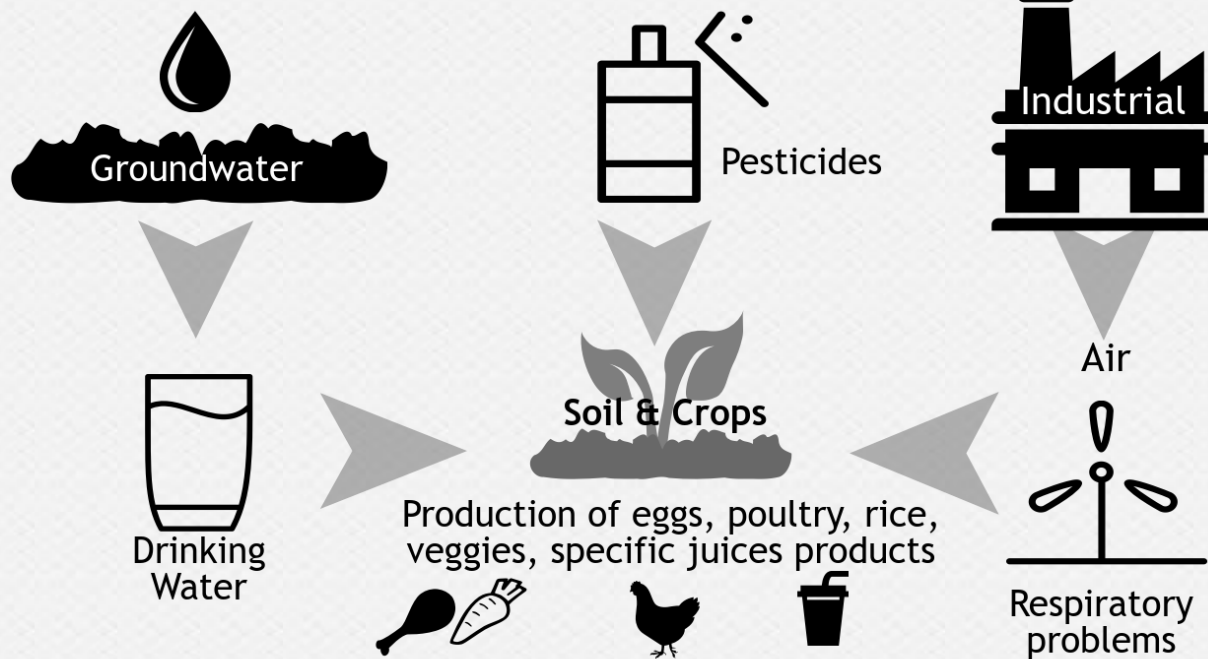




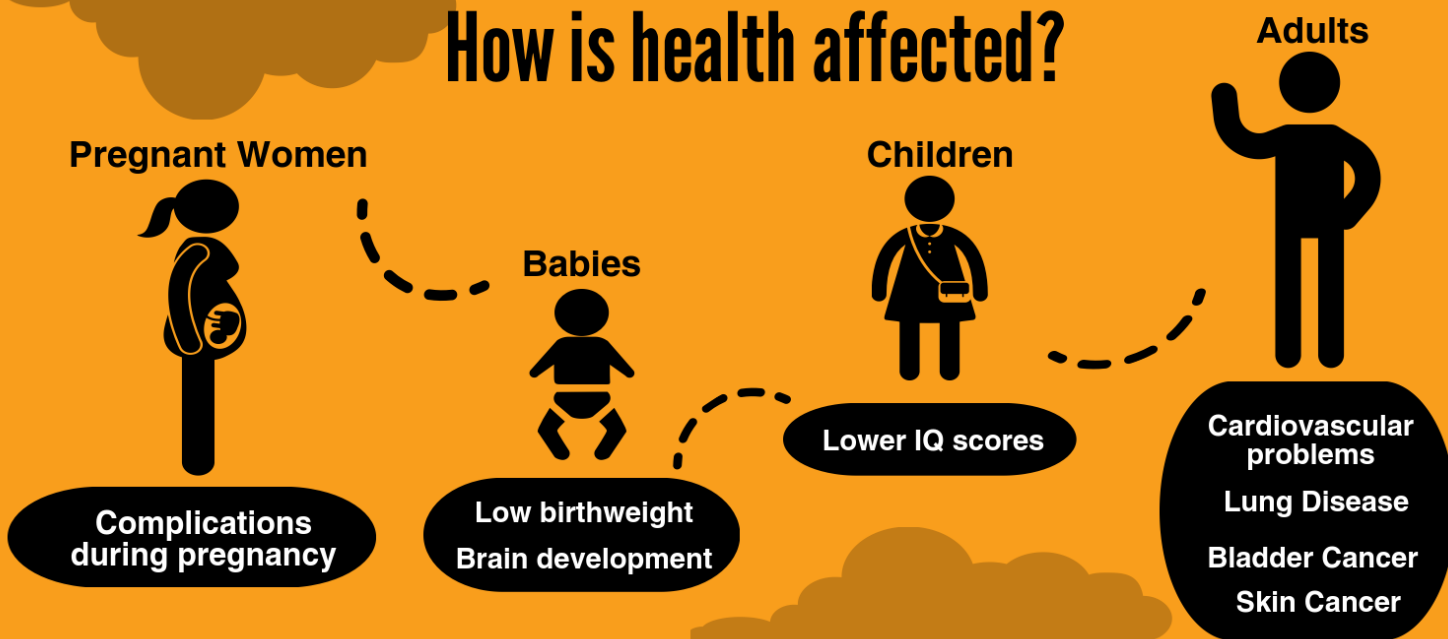
Living Near Arsenic

33
As
Arsenic
74.9216

Exposure to Arsenic



How is health affected?



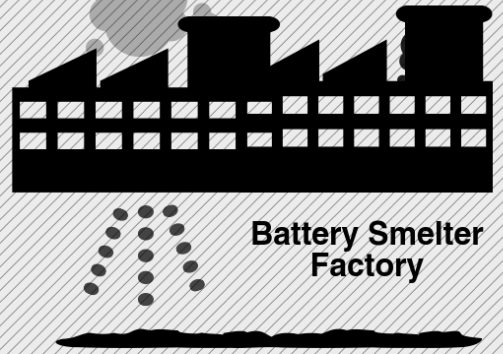
This resource is brought to you by a partnership between USC Environmental Health Centers and the Clean Air Coalition of North Whittier and Avocado Heights



Who is most vulnerable?



Low income communities
Communities near industrial work



Battery Smelter Factory

What you can do to reduce risk and exposure?

Food



Reduce apple juice



Decrease consumption of rice products



Eliminate baby rice cereal

Environmental Exposures

Always wash hands to decrease outside exposure



Check your annual drinking water quality report



Change clothes before or after going home



Get connected in your community! Make a difference!

Clean Air Coalition of North Whittier and Avocado Heights

13022 Via Del Sol Avenue
Whittier CA 90601
562-665-5669
rebecca@cleanaircoalition.org
www.cleanaircoalition.org



CLEAN AIR COALITION

We are volunteers committed to defending the environment and quality of life in our community. Our goal is to have our residents, corporate neighbors, government representatives and public agencies share our commitment to the protection of the environment and health of our community. Come join us!

This resource is brought to you by a partnership between USC Environmental Health Centers and the CAC

USC Environmental Health Centers



@USC_EH_Outreach



&



@USCEHC



ehc.usc.edu



scehsc@usc.edu

Supported by: National Institute of Environmental Health Sciences (Grant #5P30ES007048), Environmental Protection Agency (Grant # 83544101)