

Salton Sea Pollution

What is happening to the sea and how it impacts human health



1 Industrial and agricultural pollutants are released

Chemicals are used in factories and on farms. These pollutants, including pesticides and fertilizers, can be released into the waters of canals and into New and Alamo Rivers.

2 Pollutants flow into the sea

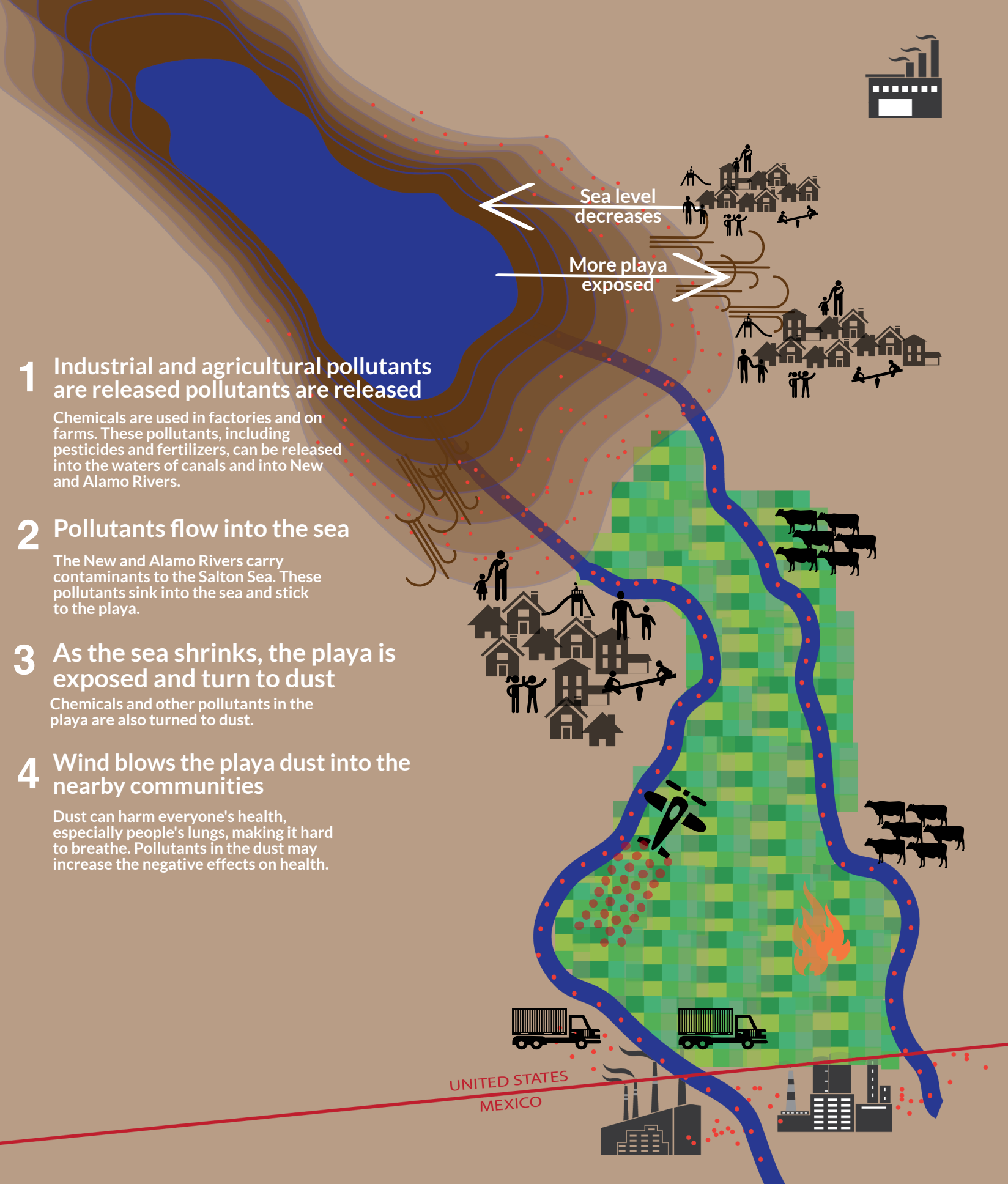
The New and Alamo Rivers carry contaminants to the Salton Sea. These pollutants sink into the sea and stick to the playa.

3 As the sea shrinks, the playa is exposed and turn to dust

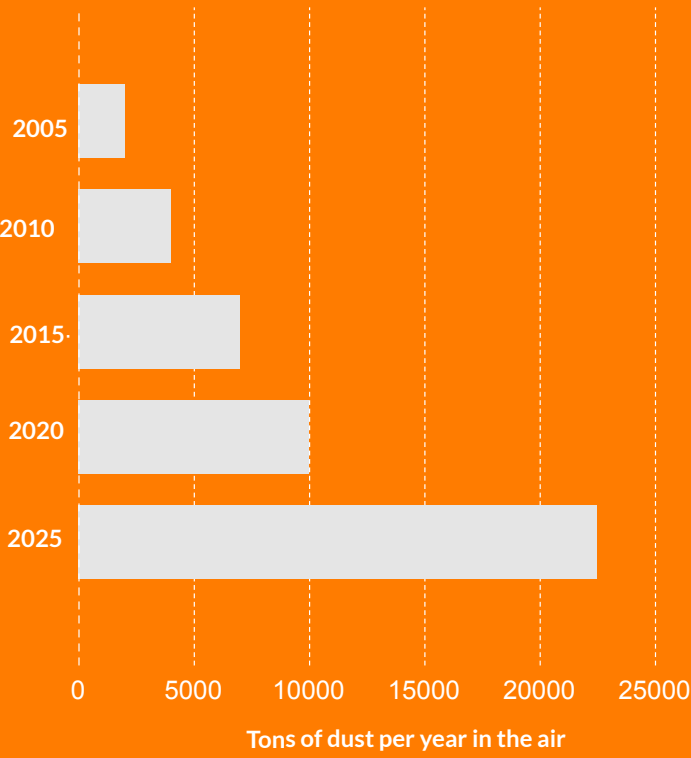
Chemicals and other pollutants in the playa are also turned to dust.

4 Wind blows the playa dust into the nearby communities

Dust can harm everyone's health, especially people's lungs, making it hard to breathe. Pollutants in the dust may increase the negative effects on health.



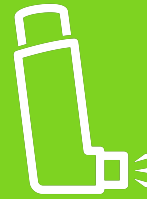
Dust will increase as the Salton Sea's water level decreases over time



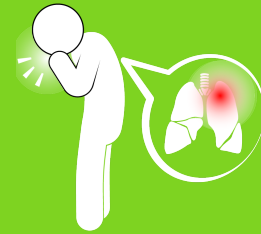
Breathing a lot of dust can cause



Smaller lungs for life



Asthma attacks



Wheezing

The number of good air days continue to decrease

2010 - - - - -> 2016

163 Good days 105

151 Moderate days 219

51 Unhealthy for sensitive groups days 38

The AIRE Study
USC Environmental Health Centers



Comite Civico
Del Valle, Inc.

235 Main Street
Brawley, CA 92227
P: (760) 351-8761
ccvhealth.org
ivan-imperial.org

This research study is supported by The Southern California Environmental Health Sciences Center based at USC funded by National Institute of Environmental Health Sciences (Grant #5P30ES007048), Environmental Protection Agency (Grant # 83544101)