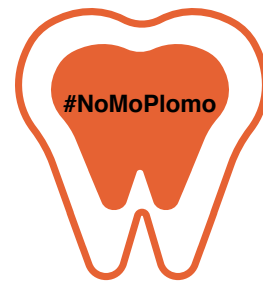


Measuring Toxic Metal Exposure: The Truth Fairy Project

Community • History • Knowledge • Health • Justice



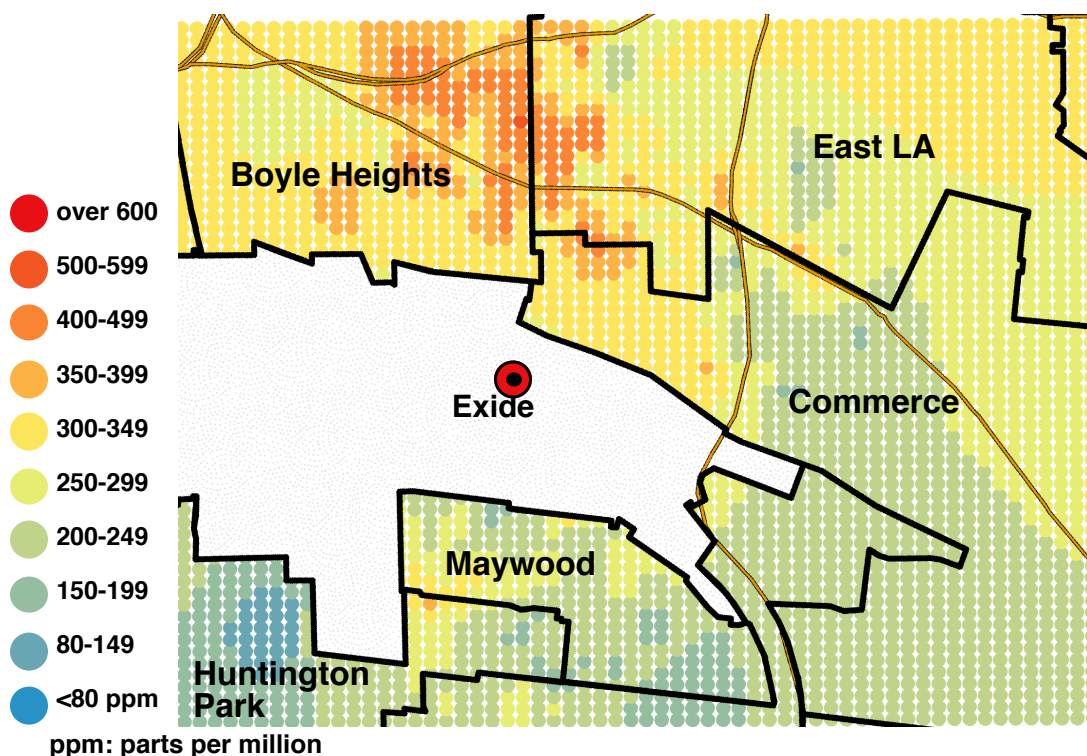
EYCEJ and USC worked together to collect baby teeth of children who lived within a 2 mile radius of Exide.

Exide
7 million lbs.
of lead that residents have
been exposed to over
30 years



Teeth can provide "windows" into prenatal and early childhood exposures to toxic metals such as lead.

Estimated Residential Soil Lead Levels (ppm)



97%

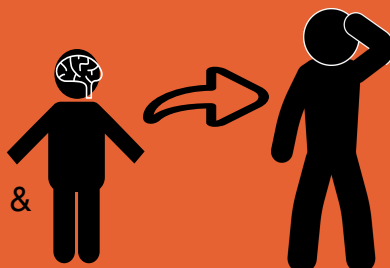
of properties tested were
above the State of CA
threshold of soil Lead
contamination:

80ppm

Health effects of lead...

Lead exposure in childhood causes...

- Brain damage
- Decrease in IQ
- Stunted growth
- Problems with learning & behavior



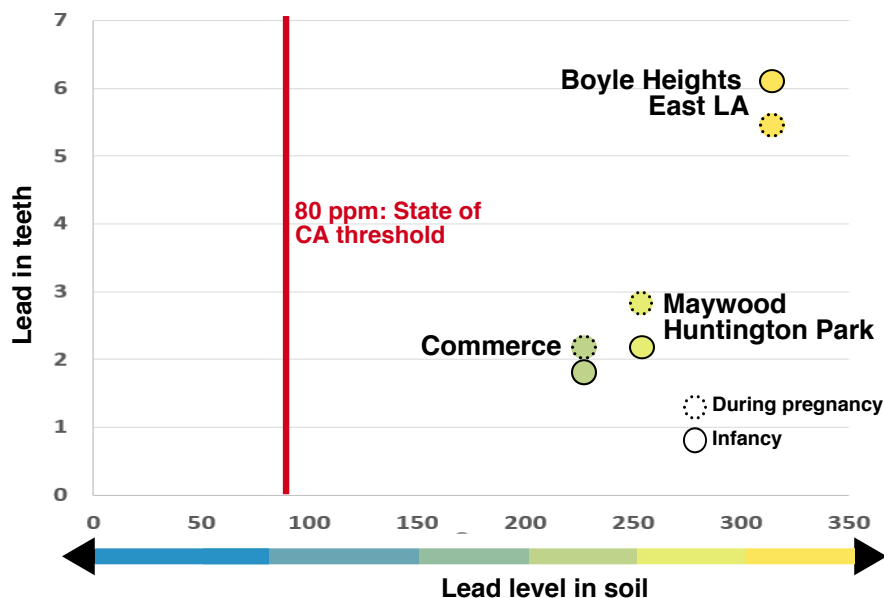
Adults who were exposed to lead as children are at higher risk for...

- Headaches
- Memory loss
- High blood pressure
- Kidney disease
- Joint pain

Truth Fairy Project Findings

Lead levels in children's teeth and soil

The communities with the highest soil lead levels also found highest Lead levels in children's teeth.



100% of children's teeth contained Lead

40% of teeth contained measurable Arsenic

43 Kids participated in this first phase of the study

5 Communities were represented in the study

Communities around Exide had twice as much Lead



in the teeth, compared to a similar urban community (Boston, MA) that did a tooth based research study.

Toxic Metals in Teeth

Teeth grow in rings like trees do, starting during pregnancy through early childhood.

2nd trimester

Teeth start to form in the mother's womb beginning in the 13th week of pregnancy.

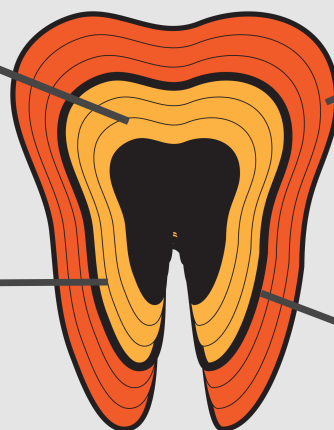
3rd trimester

The baby is growing rapidly & incorporates nutrients and toxins to which the mother is exposed.

Infancy

After a child is born, they can be exposed to toxic metals in their environment. Infants are at higher risk because they crawl and put their hands and toys in their mouths.

Birth



East Yard Communities for Environmental Justice (EYCEJ) is an environmental health and justice non-profit organization working towards a safe and healthy environment for communities that are disproportionately suffering the negative impacts of industrial pollution.

Commerce Office
323-263-2113
2317 Atlantic Ave.
Commerce, CA 90040

Long Beach Office
562-612-1802
2448 Santa Fe Ave.
Long Beach, CA 90810

Find out more

**East Yard
Communities**

For Environmental Justice



Environmental Health Centers

Teeth testing

Contact Jill Johnston
jillj@usc.edu, 323-442-1099

Supported by: National Institute of Environmental Health Sciences (Grant #5P30ES007048)

Blood lead testing

Los Angeles County, Department of Public Health
Childhood Lead Poisoning Prevention Program (800) LA-4-LEAD lead@ph.lacounty.gov